

AIR-S26A

Powered
installation
subwoofer



AIR-series has been created as a series of installation-dedicated speakers, backed up with various mounting hardware options for ease and set-up versatility.

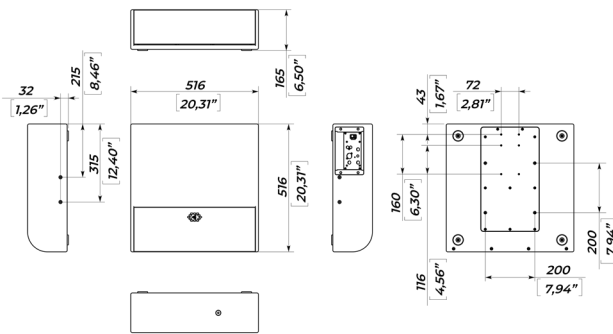
Installation subwoofers benefit from an interior-friendly form factor, complete with several neat mounting options including a low-profile wall mounting adapter and ceiling bracket, and additionally equipped with an M10 safety mounting point.

AIR-S26A is a subcompact powered installation subwoofer tailor-made to bring a smooth and deep low-frequency reinforcement into settings where space is critical and visual low profile is a must. It is based on two 6,5" high excursion woofers, a noise-free vent design, and state-of-the-art amplification for precision sound tuning.

AIR-S26A can be mounted onto the wall using the rear or side mounting points and also placed in a narrow niche.



DIMENSIONS



SPECIFICATIONS

Frequency Response (-10dB)	41 -200 Hz
Max SPL(half-space)	122 dB
Driver	2x 6,5" , 1,75" VC
Amplifier power	600 W
Amplifier	Class D with DSP, passive cooling
Connector	XLR input, RCA input, C14 mains
Dimensions (W×H×D)	516x516x165 mm
Net weight	14,6kg
Shipping weight	15,6kg
Mounting	VESA 200 x 200 AIR-CB-26 ceiling mounting points M10 safety mounting point
Enclosure	Plywood, wear-resistant paint
Speaker protection	Steel grill, acoustically transparent backing

SAFETY INSTRUCTIONS

1. Do not pour liquids on the speaker system - this may cause driver cone destruction and an unappealing speaker appearance. Do not allow direct sunlight on the speaker cone in order to prevent premature failure. Do not install a speaker system near open flames or heating elements.
2. Do not use a speaker system with damaged connectors or speaker cables so as not to cause an electric shock hazard or fire hazard.
3. Make sure the speaker system is firmly set up on the floor, stage, or wall (where applicable).
4. While setting the speaker system up on an angled or slippery surface, make the necessary arrangements to avoid vibration-induced movement.
5. Speaker system is capable of delivering significant sound pressure levels. To avoid permanent or temporary hearing damage, prolonged exposure to sound pressure levels exceeding 90 dB should be limited.

CONNECTIONS

AIR-S26A powered subwoofer is supplied with C13 mains cable (part number 00-0028130). Use only original or supplied by manufacturer mains cables!

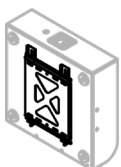
AIR-S26A powered subwoofer nominal mains power specifications: AC 220V, 50/60 Hz.

Nominal voltage tolerance: 100 - 250 V.

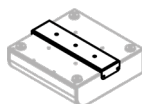
AIR-S26A powered subwoofer is equipped with XLR INPUT and RCA INPUT connectors for signal connection.

Use of balanced XLR connector cables is recommended. In case when balanced XLR connections are not available, unbalanced XLR connection is acceptable.

ACCESSORIES



AIR-WB
Wall mounting
for AIR-S26



AIR-CB-26
Ceiling mounting
for AIR-S26